

PUBLIC AUCTION

Spring Hill Acres

Contemporary Home on 2+/- Acres

Thursday, September 25, 2008 @ 4:00PM

601 Aspen Lane, Lebanon, PA

Cornwall Boro. Lebanon Co. Cornwall-Lebanon School District

From Rt. 322 West take Rt. 72 South for 3/10 mile, turn left into Spring Hill Acres for 3/10 mile, turn right on Aspen Lane to property on left. From Turnpike Exit #266 take Rt.72 North for 1.3 miles, turn right at entrance to Spring Hill Acres for 3/10 mile, turn right on Aspen lane to property on left.



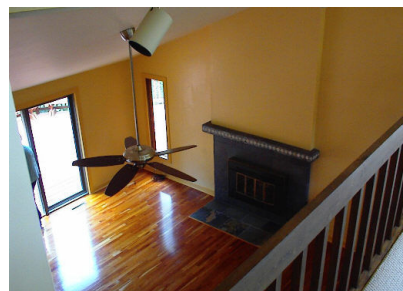
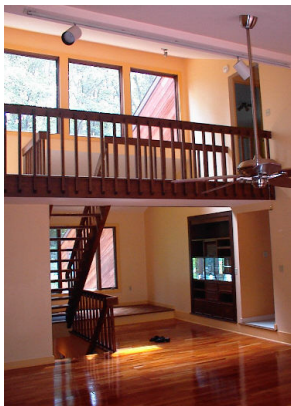
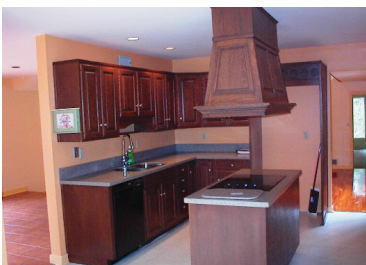
Real Estate consists of: **Contemporary Cedar Sided Home w/3470SF:** *Main Level* has eat-in kitchen w/double wall oven, DW, & island w/cooktop; dining room w/ceramic floors & sliding door exit to deck; living room w/gas fireplace, HW floors, & sliding doors to deck; master bedroom w/master bath, walk-in closet, & sliding doors to deck; ½ bath; laundry; & oversized two car garage. *Upper Level* has open loft area; 2 bedrooms; & bath. *Lower Level* has great room w/brick hearth; bedroom; bath; finished room for possible kitchen; cold storage room; & large utility storage area. 75` wrap around deck. Dual heat system w/electric heat pump & oil hot water, radiant floor heat in LL, CA, on site well & on site septic.

10`x20` Storage Shed. Wood Storage Shed. 2 Wooded Acres.

Note: This beautiful hilltop setting offers a peaceful, open and airy atmosphere within and without. Plenty of windows and light enhance the open floor plan. The large wrap around deck and multi level landscaping provide space to enjoy the natural terrain. Home is filled with modern amenities and is in immaculate move in condition. Within quick access to Turnpike, Lancaster, Lebanon, & Hershey. Owners have moved and are anxious to sell!

Open House: Saturday, September 6th & 13th from 1-3PM or anytime by appointment call 610 286-5183.

Terms: 10% down day of sale; settlement within 45 days.



HFA >> HORNING
FARM AGENCY, INC.
REALTORS • AUCTIONEERS • APPRAISERS

Merle Eberly 610 286-5183

Alvin & Elton Horning • 2417-L • C. Ivan Stoltzfus CAI

www.horningfarmagency.com

PUBLIC AUCTION

Spring Hill Acres

Contemporary Home on 2+/- Acres

Thursday, September 25, 2008 @ 4:00PM

601 Aspen Lane, Lebanon, PA

Cornwall Boro. Lebanon Co. Cornwall-Lebanon School District

From Rt. 322 West take Rt. 72 South for 3/10 mile, turn left into Spring Hill Acres for 3/10 mile, turn right on Aspen Lane to property on left. From Turnpike Exit #266 take Rt. 72 North for 1.3 miles, turn right at entrance to Spring Hill Acres for 3/10 mile, turn right on Aspen lane to property on left.

Real Estate consists of: Contemporary Cedar Sided Home w/3470SF: *Main Level* has eat-in kitchen w/double wall oven, DW, & island w/cooktop; dining room w/ceramic floors & sliding door exit to deck; living room w/gas fireplace, HW floors, & sliding doors to deck; master bedroom w/master bath, walk-in closet, & sliding doors to deck; ½ bath; laundry; & oversized two car garage. *Upper Level* has open loft area; 2 bedrooms; & bath. *Lower Level* has great room w/brick hearth; bedroom; bath; finished room for possible kitchen; cold storage room; & large utility storage area. 75 ` wrap around deck. Dual heat system w/electric heat pump & oil hot water, radiant floor heat in LL, CA, on site well & on site septic.

10`x20` Storage Shed. Wood Storage Shed. 2 Wooded Acres.

Note: This beautiful hilltop setting offers a peaceful, open and airy atmosphere within and without. Plenty of windows and light enhance the open floor plan. The large wrap around deck and multi level landscaping provide space to enjoy the natural terrain. Home is filled with modern amenities and is in immaculate move in condition. Within quick access to Turnpike, Lancaster, Lebanon, & Hershey. Owners have moved and are anxious to sell!

Open House: Saturday, September 6th & 13th from 1-3PM or anytime by appointment call 610 286-5183.

Terms: 10% down day of sale; settlement within 45 days.



Merle Eberly 610 286-5183

Alvin & Elton Horning • 2417-L • C. Ivan Stoltzfus CAI

www.horningfarmagency.com