

PUBLIC AUCTION

PRIME REAL ESTATE IN EAST EARL AREA

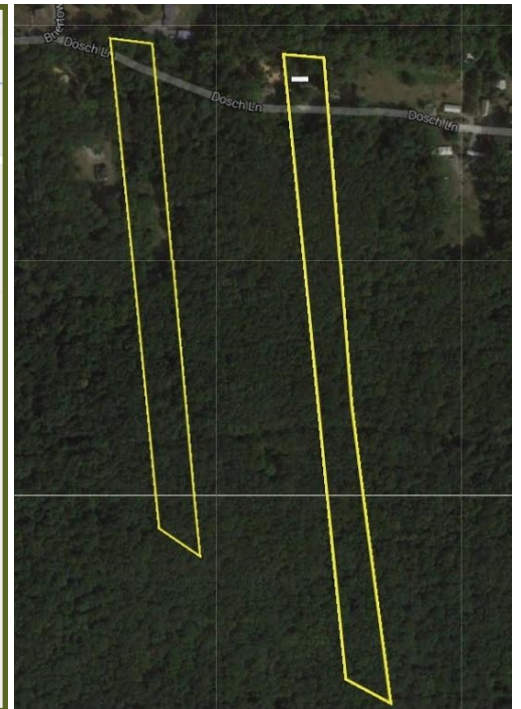
Parcel #1—5.66 Acre Wooded Lot

Parcel #2—4.63 Acre Wooded Lot

Tuesday, October 18, 2016 at 5:00 PM

Briertown Road, East Earl, PA 17519, East Earl Township, Lancaster County, PA
Eastern Lancaster County School District

From Blue Ball (Rts 23 & 322) take 322 E 2.2 miles, right on Briertown Rd for 1/2 mile to Dosch Lane on left.



Information is believed to be correct but not guaranteed

Parcel #1: 5.66 Acres mostly wooded with mobile home (needs total restoration). Slightly sloping topography with mature timber. Passing perc & probe test in 2013. Taxes \$1,687

Parcel #2: 4.63 Acres, wooded, slightly sloping topography with mature timber. Passing perc and probe test in 1998. Taxes \$1,456

Plan to attend this auction, owners are motivated to sell!!! Ideal opportunity to purchase wooded acreage for investment, or to build your dream home! Parcels will be sold separately. Brochure with plot plan is available on site. Zoned: Conservation/Open Space

Terms: 10% down day of sale; settlement within 45 days of sale

Terms By: Charles E. Buchanan Jr & Shirley Ann, Eric J. Buchanan & Audrey M.

Merle Eberly - 2417-L—Brian Oberholtzer
Alvin Horning - C.Ivan Stoltzfus CAI



Realtors - Auctioneers - Appraisers

610-286-5183

www.horningfarmagency.com