

# PUBLIC AUCTION

17 Acres of Woodland

Honey Brook Area

Thursday, October 18, 2012 at 4:00 PM

**62 Grow Road, Honey Brook, PA, Honey Brook Twp. Chester Co. Twin Valley School District**

From Honey Brook take Rt. 10 south for 3.8 miles, left on Hill Rd. for 3 miles, left on Grow Road, follow signs.



**This 17 acre parcel is located along Grow Road, midway between Beaver Dam Road and Hill Road. Approximately 14 acres are wooded with 3 acres open. Enrolled in the Conservation Easement Program which includes a 2 acre building envelope.**

**This is a great opportunity to purchase a secluded property for building your dream home. Land is bordered by other wooded parcels with plenty of wildlife. Also a great investment opportunity!**

**Please view the property anytime or for a plot plan or additional details, call auctioneers.**

**Terms:** 10% down day of sale; settlement within 45 days

**Terms By:** Maureen Miller

Merle Eberly - 2417-L

Alvin Horning - C.Ivan Stoltzfus CAI

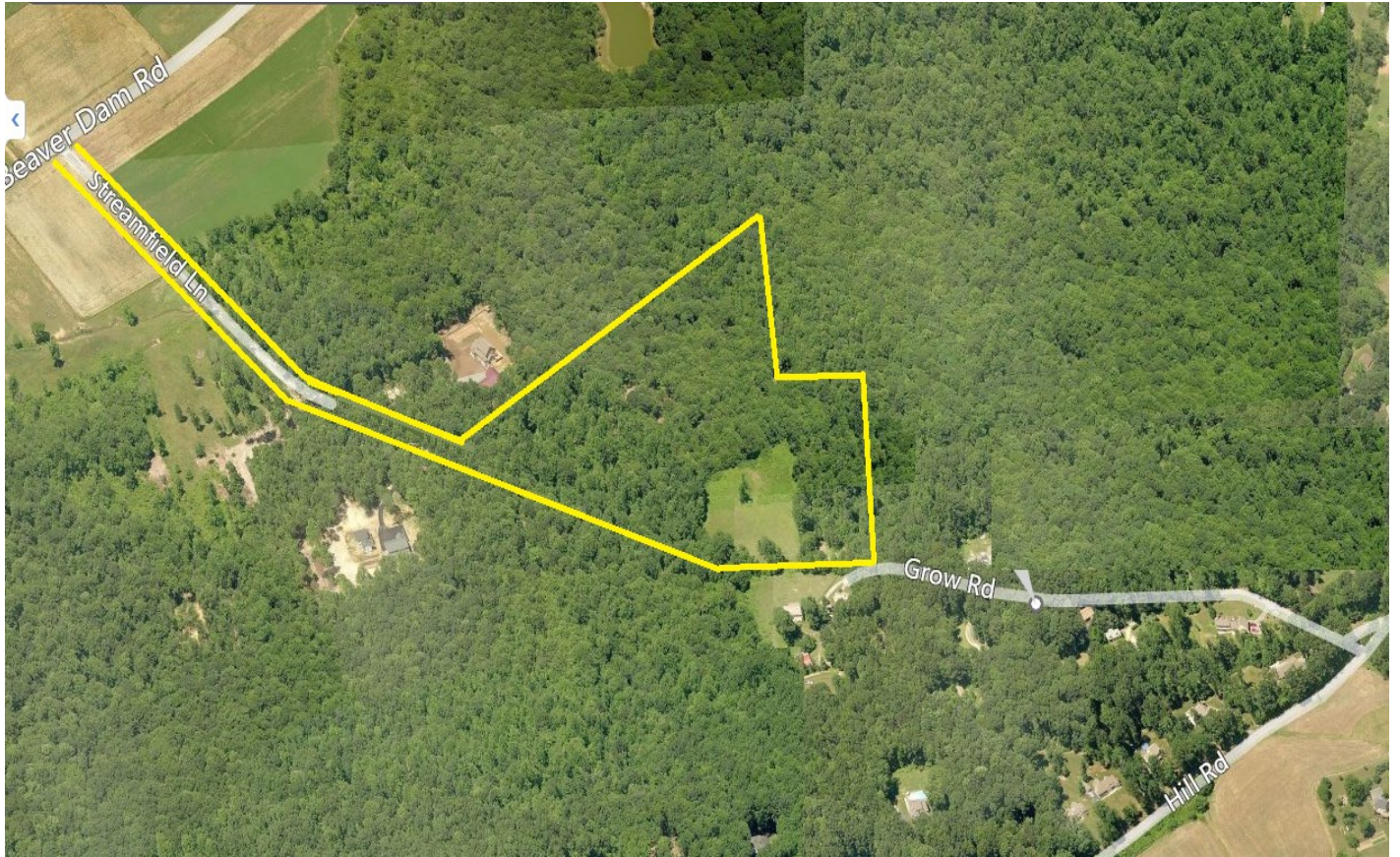


**610-286-5183**

[www.horningfarmagency.com](http://www.horningfarmagency.com)



# Aerial



Note: This is not a survey. Information believed to be correct but not guaranteed.



610-286-5183

[www.horningfarmagency.com](http://www.horningfarmagency.com)