

PUBLIC AUCTION

9.3 ACRES OF PRIME WOODLAND WITH STREAM & POND

**HONEY BROOK AREA
MONDAY, OCTOBER 20, 2025 @ 5 PM**



LOCATION: 230 Rock Rd., Honey Brook, PA. Honeybrook Township, Chester County.

REAL ESTATE: A rare opportunity to build your dream house on this gorgeous 9.3 acres of Woodland located along a quiet country road just south of Honey Brook. This land has many opportunities with 500' bordering Beaver Dam Road and 665' of road frontage on Rock Road with a stream bordering the rear of the property along with a pond. The tract is totally wooded with mature timber. Located midway between Compass and Honey Brook it is located within minutes of most conveniences. Zoned Agricultural District. Taxes: \$1,647

OPEN HOUSE: Land can be viewed at your convenience. Call or text Merle with any questions at 484-256-0855, or email at merle@horningfarmagency.com or visit our website.

TERMS: 10% down day of sale; balance on or before 45 days. Terms by: Linda Beiler & Donna Martin

PLEASE SEE MORE INFORMATION ON BACK OR VISIT OUR WEBSITE

Merle Eberly, Auctioneer
Steven Newswenger, Apprentice Auctioneer
Pete Sensenig, Auctioneer
Horning Farm Agency, Inc. AY002091



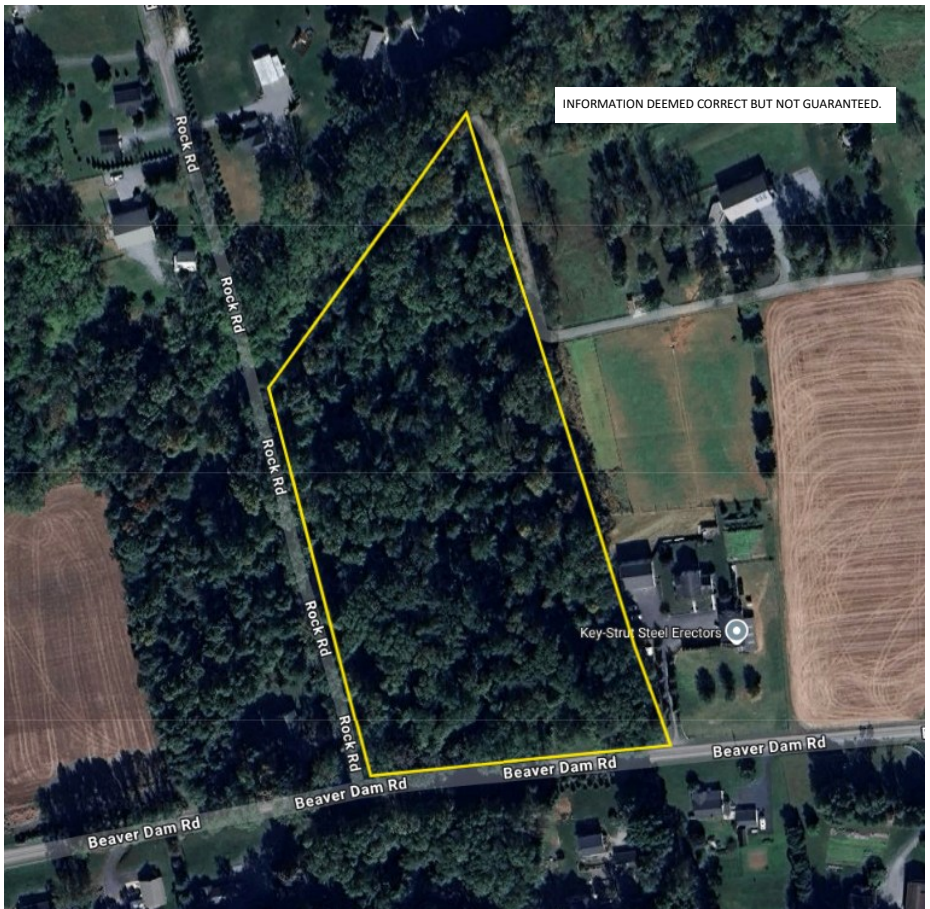
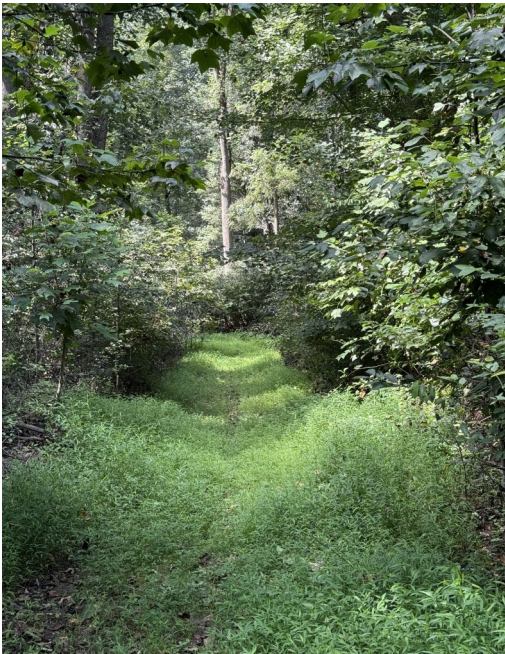
HorningFarmAgency.com
610-286-5183

AUCTIONEERS - REALTORS - APPRAISERS



Nestled between Honey Brook and compass, this beautiful 9.3 acre wooded property offers the perfect blend of privacy and convenience. Featuring a tranquil stream and picturesque pond, it's a nature lover's paradise.

With excellent road frontage on two roads, access is easy and the location provides quick trips to nearby shops, dining and amenities. In other words, the perfect place to build your dream home along with many other possibilities!



AUCTIONEERS - REALTORS - APPRAISERS

HorningFarmAgency.com

610-286-5183